

# Shiraz™

## The Professional RIP...

...for processing, printing and managing the production of large format digital colour images



Mac OS  
System 8+



Microsoft  
**Windows**  
95, 98, NT, 2000 & XP



- Easy to use
- Windows™ and Mac OS™ versions
- Full PostScript 3 compatible
- Tiling, size and crop
- Full range of device drivers
- Heidelberg ICC colour management engine
- RIP and print
- HiFi, Hexachrome and spot colour

**Shiraz 24** - for up to 24" wide prints

**Shiraz 36** - for up to 36" wide prints

**Shiraz 48** - for up to 48" wide prints

**Shiraz 60** - for up to 60" wide prints

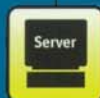
**Shiraz XL** - for prints with unlimited width

...all with tiling, size and crop!

enhanced by  
**HEIDELBERG**

DESIGN

PRODUCTION



Network

# Shiraz™ V6

## Ready, steady, go for Shiraz V6!

AIT is ready to set a new benchmark in large-format RIP technology - Shiraz Version 6

The countdown to September's release of Shiraz V6 has started - so count down these features to get a foretaste of what it has in store for high-productivity commercial display printing.



- 6** Shiraz V6 offers the unique choice of three different operating systems: Windows, Mac OSX and Linux - and the RIP looks and works exactly the same on each platform.
- 5** Shiraz V6 boosts processing speed by a factor of 10 and further enhances the noted high quality of Shiraz photo-realistic reproduction.
- 4** Shiraz V6 provides multiple device support, running multiple jobs and driving several printers of different makes and models simultaneously and independently.
- 3** Shiraz V6 supports multiple clients and multiple servers on a network that can be configured to meet different work flows and production loads.
- 2** Shiraz V6 increases work throughput and time management efficiency, employing the latest computer software techniques to exploit the benefits of simultaneous multi-threaded job processing.
- 1** Shiraz V6 offers improved colour management, colour quality and choice of user-defined colour channels and spot colours. External plug-in colour management modules, such as the operating system's native CMS (colour management system), can now also be employed.
- 0** Shiraz V6 offers improved automatic linearisation and ink limiting controls to boost drying times and save on waste.



Mac OS  
System 8+



Microsoft  
**Windows**  
95, 98, NT, 2000 & XP



Linux 2.0  
POWERED

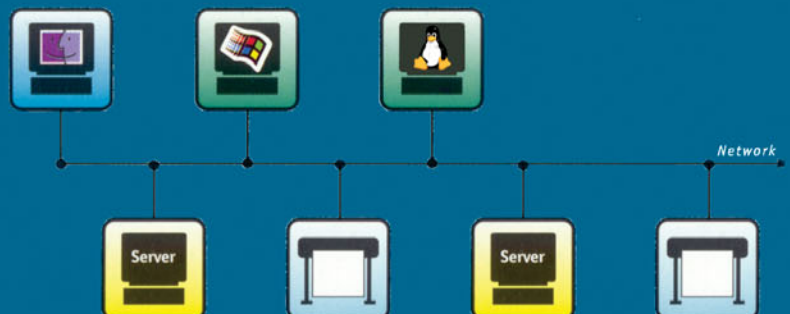
enhanced by

**HEIDELBERG**

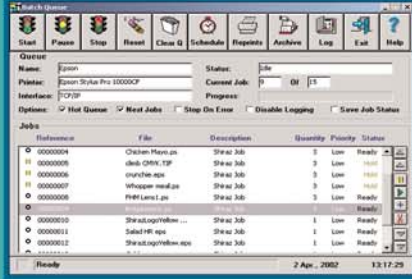
## Shiraz. It's the RIP that counts.

DESIGN

PRODUCTION



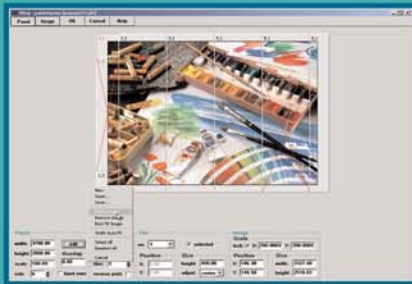
# Shiraz specifications



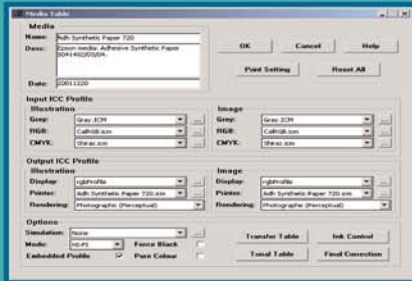
## Batch and queue



## Process and layout preview



## Tiling and panelling



## ICC colour management



## Printer control

## Operating systems

Windows 95, 98, NT4, 2000 and XP  
Mac OS 8.5+

## Shiraz 24 drivers

Encad Cromat 24  
Epson Stylus PRO 7000 / 7500  
HP DesignJet 450C / 455A (24"), 750C (24"), 500 (24"), 800 (24")

## Shiraz 36 drivers

Encad NovaJet PRO 36  
CadJet 3D  
Mutoh Falcon RJ4000 / 4100  
HP DesignJet 450C (36"), 750C (36"), 1050C, 2000CP

## Shiraz 48 drivers

Encad NovaJet PRO 50, PRO 42e, PROe 600 (42"), 500 (42"), 630 (42"), 700 (42"), 850 (42")  
Epson Stylus 9000 / 9500 / 10000 / 10000CF  
HP DesignJet 500 (42"), 800 (42"), 5000 (42")  
Roland Hi-Fi Jet PRO (42"), FJ-400 (44")

## Shiraz 60 drivers

AIT JetSolver 652  
Encad NovaJet PRO 60e, PROe 600 (60"), 500 (60"), 630 (60"), 700 (60"), 850 (60"), 880  
Encad NovaCut  
Graphtec SignJet PRO  
HP DesignJet 3000CP, 5000 (60")  
Mimaki JV2-130, JV4-130  
Mutoh 50"  
Mutoh Albatross 54  
Mutoh Falcon II/RJ-8000 (50")  
Mutoh Falcon RJ-6100  
Roland Hi-Fi Jet PRO (54"), FJ-500 (54")

## Shiraz XL drivers

Mimaki JV4-160, JV4-180  
Mutoh Falcon II/RJ-8000 (64" & 87")  
Mutoh Toucan (64" & 87")  
Roland Hi-Fi Jet PRO FJ-600 (64")  
Xerox 8900 Series Electrostatic

## PostScript interpreter

JAWS PostScript 3 compatible

## ICC colour management

Heidelberg CMM

## Screening

Error diffusion (including multi-level), clustered halftones, dispersed halftones (solid)

## Features

Tiling, panelling, size and crop, image preview, step and repeat, printer control, reprint, spooler, templates, layout preview, full speed IKON drivers, HI FI hexachrome and 8-bit greyscale, direct densitometer and spectrometer connection, pre-separated files, separated output, multiple page documents, nesting, scheduling, workflow management, mirror and rotate, batch and queue management, remote control of jobs, queue and print, RIP and print, RIP then print, job marks and labels, interpolation and anti-aliasing, Mac & PC port monitors, font loader and manager, spot colours, stand-alone or client/server operation.

## Connectivity

Ethernet (TCP/IP), Centronics, USB and Firewire

## File inputs

EPS, PostScript, PDF, JPEG and TIFF

## Languages

English, French, German, Italian and Spanish

Technical specification subject to change without notice

Distributor:

**Applied Image Technology Ltd**

60 Churchill Square  
Kings Hill

T 01732 875 000

F 01732 875 333

E shiraz@applied-image.com

W www.applied-image.com

West Malling

Kent

ME19 4YU

ENGLAND

[www.shiraz-rip.com](http://www.shiraz-rip.com)

©1995-2002 AIT International. Shiraz is a trademark of AIT International.

MS DOS and Windows are trademarks of Microsoft Corporation. Novajet is a trademark of Encad Inc. PostScript is a trademark of Adobe Systems Inc. JAWS is a trademark of Jaws Systems Ltd. Heidelberg is a trademark of Heidelberg. Portions copyright ©2001 Heidelberg Druckmaschinen AG. HP DesignJet is a trademark of Hewlett Packard. Other company or product names are recognised and acknowledged. AIT International is a trading name of Applied Image Technology International Ltd. All rights reserved. Unauthorised use, reproduction, or disclosure is prohibited.

AIT

International