



*Multi-
Directional
Sign
System*

Your Source for Sign Components

APCO

SignPoint[®] Sign System

The Product

Fingerpoint signs are one of the oldest and most understandable forms of directional signing. In today's complex environments, this simple, radial concept provides one of the best solutions for both vehicular and pedestrian traffic, inside and outside.

SignPoint maximizes design options with a strong, adaptable system based on a traditional and time-tested concept.

Component Options

- Two 100mm/4" Post Shapes
Octagonal & Circular
- Three Directional Blade Shapes
Radius End, Chevron End, & Square End
Tail Detail Radius only
- Two Standard Blade Heights
150mm/6" & 200mm/8"
Custom Sizes Available
- Two Standard Blade Lengths
600mm/24" & 750mm/30"
Blades are 6mm/1/4" Aluminum
Custom Lengths Available
- Four Panel Face Sizes
Panels are 6mm/1/4" Aluminum
Custom Sizes Also Available
- Four Crown Panel Shapes
Crown Panels are 6mm/1/4" Aluminum
Round, Triangular, Square, & Fan
- Post Cap Options
Dome (cast aluminum), Octapoint (cast aluminum), Flat, & Flat with Crown Slot
- Decorative Components:
Circular Ring (aluminum)
Octagonal Ring (aluminum)

Features and Benefits

- Strong & Robust Design
- Traditional & Contemporary Looks
- Receives 6mm/1/4" Blades
- Unique Clamp Design
Permits any Vertical Size Blade
Adjusts to Multiple Directions; Octagonal - 8 points, Circular - Unlimited points
Blades do not twist
- Steel Circular Posts Also Available
- Simple to Modify on Site
- Easy to Install
- Colors & Finishes
Mill
APCO Standard Polyurethane Colors
Powder Coated Colors
Custom Colors

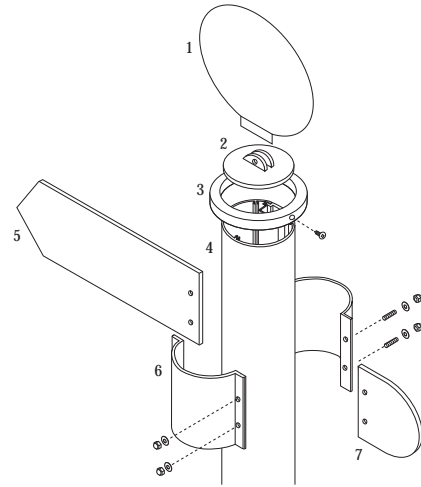
APCO

APCO USA
Components Division
388 Grant St., SE
Atlanta GA USA 30312-2227
Tel (800) 215-4039
Fax (800) FAX-APCO

APCO UK
LKH Estate, Tickhill Road
Balby, Doncaster
England DN4 8QG
Tel 0-1302-311-121
Fax 0-1302-311-852

Exploded View

- 1) Circular Crown Panel
- 2) Circular Post Cap w/Crown Slot
- 3) Circular Decorative Ring
- 4) Circular Post
(Pocket Filler Included)
- 5) SignPoint Directional Blade
- 6) Clamp
- 7) Tail Detail



Directional Blades

Tail Detail



SPRT150-75 6" x 3"
150mm x 750mm



SPRT150-75 6" x 3"
150mm x 750mm



SPRT200-100 8" x 4"
200mm x 1000mm

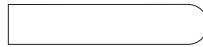


SPRT200-100 8" x 4"
200mm x 1000mm

Radius End



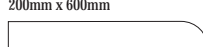
SPFR150-600 6" x 24"
150mm x 600mm



SPFR150-750 6" x 30"
150mm x 750mm



SPFR200-600 8" x 24"
200mm x 600mm



SPFR200-750 8" x 30"
200mm x 750mm

Chevron End



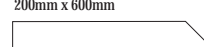
SPFC150-600 6" x 24"
150mm x 600mm



SPFC150-750 6" x 30"
150mm x 750mm



SPFC200-600 8" x 24"
200mm x 600mm



SPFC200-750 8" x 30"
200mm x 750mm

Square End



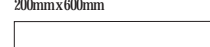
SPFS150-600 6" x 24"
150mm x 600mm



SPFS150-750 6" x 30"
150mm x 750mm



SPFS200-600 8" x 24"
200mm x 600mm

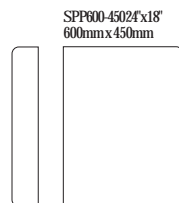


SPFS200-750 8" x 30"
200mm x 750mm

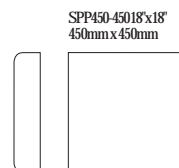
NOTE: Dimensions shown represent the visible area of the Blades.
(1-1/2" of the Blade is hidden behind Clamp.)

Graphics Panels

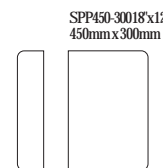
NOTE: Dimensions shown represent the visible area of the Panels.
(1-1/2" of the Panel is hidden behind Clamp.)



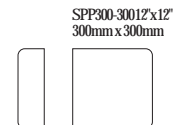
SPP600-450 24"x18"
600mm x 450mm



SPP450-450 18"x18"
450mm x 450mm

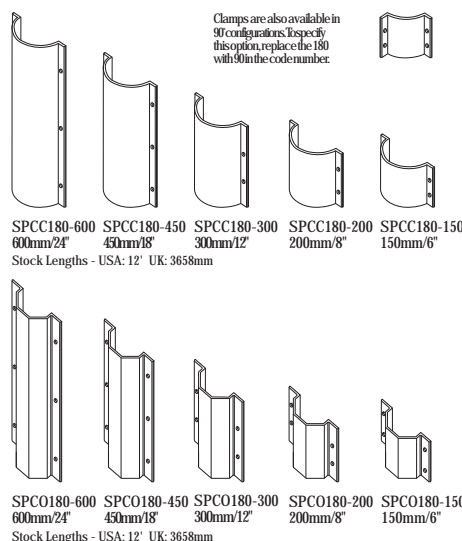


SPP450-300 18"x12"
450mm x 300mm



SPP300-300 12"x12"
300mm x 300mm

Clamp Sizes



Post & Decorative Options

